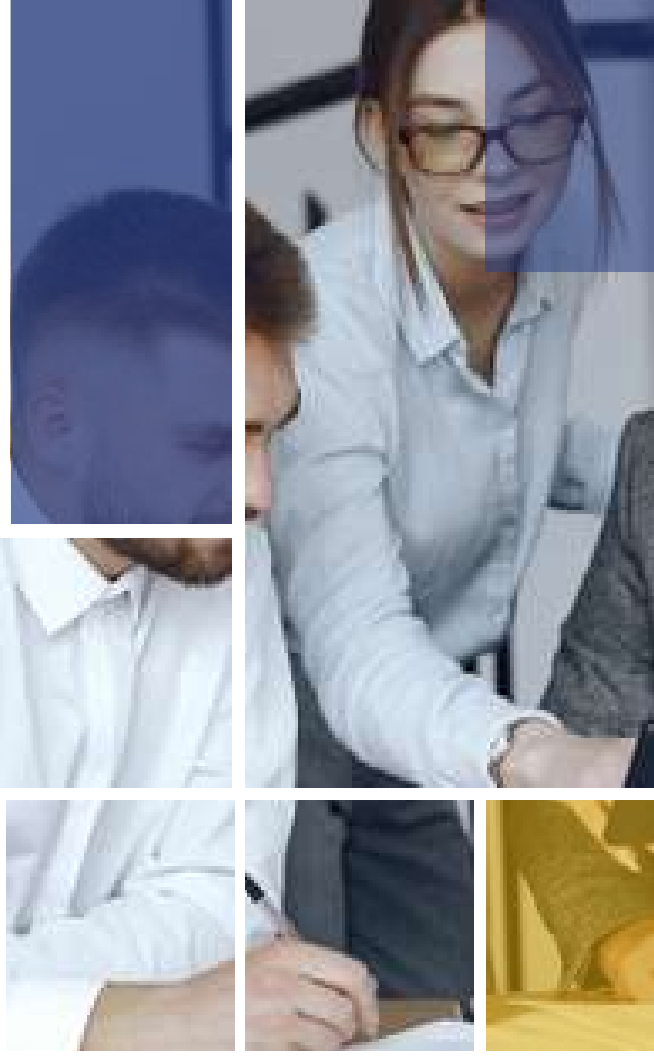




**PRODUCT CATALOG**  
**2020**



Enza Electric is the new milestone in the mastering of Enza Electric group in electrical technology. The company is committed to cater quality Electrical and Switchgear products in the Middle East, Africa and Europe ensuring high standards and reliability. The most cost-effective and innovative products with utmost technological advancement are introduced to you by our efficient and trained technical team. Customer satisfaction is our basic goal in order to build the long-term enduring partnership for simultaneous growth.



#### CUSTOMER SATISFACTION

Customer satisfaction is our basic goal in order to build the long-term enduring partnership.



#### HIGH STANDARDS & RELIABILITY

The company is committed to cater quality Electrical products .

**RELIABILITY**

**&**

**ACCURACY MEETS HERE**

## Enza Electric Pvt Ltd



MEPZ - Special Economic Zone, Chennai,  
Tamil Nadu 600045, India



+91 - 86060 75125, support@enzaelectric.com

# Table of Content

Multifunction Meter	<b>01</b>
Power Factor Controller	<b>04</b>
Digital Panel Meter	<b>05</b>
Energy Meter	<b>09</b>
Analog Panel Meter	<b>10</b>
Current Transformer	<b>15</b>
Door Limit Switch	<b>22</b>
Protection Relays	<b>23</b>
Programmable Timers	<b>25</b>
Earth Leakage Relay	<b>29</b>
Core Balance CT	<b>30</b>



# Multifunction **Meter**

## LCD Display with RS-485 MODBUS

### EMF 9620

#### Features:

- ▶ LCD display with backlight
- ▶ Site Programmable CT and PT ratio
- ▶ True RMS measurement
- ▶ Compact 96 x 96 x 55 mm DIN enclosure
- ▶ Micro-controller based
- ▶ RS485 computer interface
- ▶ Displays with customized LCD
- ▶ Autoranging
- ▶ Frequency (Hz), three energies (KWh, KVAh, KVARh)KVAh, KVARh)



#### Applications:

- ▶ Control Panel
- ▶ Distribution System
- ▶ Generator sets
- ▶ Motor Control
- ▶ Test Bench
- ▶ Energy Management
- ▶ Process Control & SCADA

#### Certifications:



DIMENSIONS	96 x 96 x 55 mm (HxWxD); Panel cutout : 92 x 92 mm
DISPLAY	LCD with backlight
DIGITS	4 rows of 4 digits
ELECTRICAL CONNECTION	1Ø - 2W, 2Ø - 3W, 3Ø - 3W, 3Ø - 4W
RATED INPUT VOLTAGE	10 to 500VAC (L - L), 10 to 300VAC (L - N)
RATED INPUT CURRENT	Nominal 5A AC (Min - 11mA ; Max - 6A)
RESOLUTION	Energy 0.1 kWh, Power factor: 0.001 Frequency: 0.01 Hz, Voltage: Autoranging, Current: Autoranging, Power: Autoranging
CT PRIMARY	5A to 5000A Site Selectable (Programmable for any value)
CT SECONDARY	5A or 1A (To be specified at the time of Ordering)
PT PRIMARY	100V to 500kV (Programmable for any value)
PT SECONDARY	100 to 500V AC (L - L) (Programmable for any value)
COMMUNICATION	Rs485 MODBUS RTU protocol
MEASURING PARAMETER	Voltage (L - L / L - N) (Individual / Average), Current (Individual / Average), Frequency, Power factor (Individual / Reactive & Apparent Power ( Individual / Total), Active, Reactive & Apparent Energy (Total)
ACCURACY	Voltage $\pm 1\%$ of F.S., Current $\pm 1\%$ of F.S. Power factor $\pm 1\%$ of F.S., Frequency $\pm 0.3\%$ of F.S. Power (Active, reactive and Apparent): 1%, Energy (Active, reactive and Apparent): Class 1.0s
SUPPLY VOLTAGE (AC : 50 / 60 Hz)	80 to 270V AC

# Multifunction Meter

## LED Display with RS-485 MODBUS

### EMF 9615

#### Features:

- ▶ Bright 0.43" LED Display
- ▶ CT Ratio Site Programmable (Primary & Secondary)
- ▶ True RMS measurement
- ▶ Compact 96 x 96 x 55 mm DIN enclosure
- ▶ RS485 computer interface
- ▶ Inbuilt Run Hour Feature
- ▶ Autoranging
- ▶ Micro-controller based



#### Applications:

- ▶ Control Panel
- ▶ Distribution System
- ▶ Generator sets
- ▶ Motor Control
- ▶ Test Bench
- ▶ Energy Management
- ▶ Process Control & SCADA

#### Certifications:

CE RoHS



DIMENSIONS	96 x 96 x 55 mm (HxWxD); Panel cutout : 92 x 92 mm
DISPLAY	7 segment 0.43" LED
DIGITS	3 row 4 Digit
ELECTRICAL CONNECTION	1Ø - 2W, 2Ø - 3W, 3Ø - 3W, 3Ø - 4W
RATED INPUT VOLTAGE	11 to 300V AC (L - N), 19 to 500V AC (L - L)
RATED INPUT CURRENT	Nominal 5A AC (Min - 14mA ; Max - 6A) (Isolation CTs mandatory)
RESOLUTION	For energy : 0.01k, 0.1k, 1k, 0.01M, 0.1M, 1M (Depending upon CT ratio x PT ratio), For Current, Voltage, Power : Auto resolution, For Power factor : 0.001
CT PRIMARY	0 to 5000A (Programmable for any value)
CT SECONDARY	1A or 5A (Site Selectable)
PT PRIMARY	100V to 500kV (Programmable for any value)
PT SECONDARY	100 to 500V AC (L - L) (Programmable for any value)
COMMUNICATION	Rs485 MODBUS RTU protocol
MEASURING PARAMETER	Voltage (L - L / L - N) (Individual / Average), Current (Individual / Average), Frequency, Power factor (Individual / Total) Active, Reactive & Apparent Power (Individual / Total), Active, Reactive & Apparent Energy (Total)
ADDITIONAL FUNCTIONS	Run Hour, System PF
SUPPLY VOLTAGE (AC : 50 / 60 Hz)	90 to 270V AC

# Multi Meter

## Volt, Ampere & Frequency

### EMF 9610

#### Features:

- ▶ 0.56" Ultra bright LED Display
- ▶ Site Programmable CT and PT ratio
- ▶ True RMS measurement
- ▶ Autoranging
- ▶ Compact 96 x 96 x 55 mm DIN enclosure



#### Measuring Parameters

- ▶  $V_{L-L}$  (Individual/Average)
- ▶  $V_{L-N}$  (Individual/Average)
- ▶ Current (Individual/Average)
- ▶ Frequency

#### Applications:

- ▶ Control Panel
- ▶ Distribution System
- ▶ Generator sets
- ▶ Motor Control
- ▶ Test Bench
- ▶ Energy Management
- ▶ Process Control & SCADA

#### Certifications:



DIMENSIONS	96 x 96 x 55 mm (HxWxD); Panel cutout : 92 x 92 mm
DISPLAY	7 segment 0.56" LED
DIGITS	3 row 4 Digit
ELECTRICAL CONNECTION	1Ø - 2W, 2Ø - 3W, 3Ø - 3W, 3Ø - 4W
RATED INPUT VOLTAGE	11 to 300V AC (L - N), 19 to 500V AC (L - L)
Burden	0.5VA
CT PRIMARY	5A to 5000A (Programmable for any value)
CT SECONDARY	5A or 1A (To be specified at the time of Ordering)
Kwh	0 to 9999999.9 KWh Accuracy: 1.0s
KVARh	0 to 9999999.9 KVARh Accuracy: 1.5% of reading (Between 0.5 leg to 0.8 lead)
KVAh	0 to 9999999.9 KVAh Accuracy: 1.0% of reading
System PF	Accuracy: 1.0% of reading, Range: 0.05 to 1.00 Lag/Lead
System KVA	Accuracy: 1.0% of reading
System KW	Accuracy: 1.0% of reading (Between 0.5 leg to 0.8 lead)
System KVAR	Accuracy: 1.5% of reading (Between 0.5 leg to 0.8 lead)
SUPPLY VOLTAGE	80 to 270V AC, 50/60Hz

## PFC-EN08

### Features:

- ▶ Most reliable and hassle free contactor switching technology.
- ▶ Fastest PF correction time equalling the solid state switching performance.
- ▶ Control Modes: Power Factor and reactive power
- ▶ Easier operation
- ▶ Auto/Manual Scrolling
- ▶ Over/Under Voltage Protection



### Applications:

- ▶ Power Factor Control Mode
- ▶ Reactive Power Control Mode
- ▶ Energy Management

### Certifications:

CE RoHS



Dimensions	144 x 144 x 55 mm (HxWxD); Panel cutout : 142 x 142 mm
Display	7 segment 0.56" LED
Rated Voltage	220 V/440 V AC
Rated Frequency	50/ 60 Hz
Rated Current	0-5 A
Capacity of output contact	220 VAC/ 7 A
Display power factor	Lag 0.001 to lead 0.001
Measure reactive power	0 to 9999 kVAr
Under Voltage protection value	340 V
Control Mode	Optimize automatically / input cut circularly
Sensitivity	60mA voltage and current

# Digital Panel **Meter**

## Single Phase Volt Meter

### EV 91

#### Features:

- ▶ 4 Digit Ultra bright LED Display
- ▶ True RMS measurement
- ▶ 3 Samples per Second
- ▶ Auto Ranging
- ▶ Universal Auxiliary supply



#### Applications:

- ▶ Control Panel
- ▶ Distribution System
- ▶ Source Desks
- ▶ Power Panels

#### Certifications:

CE RoHS



DIMENSIONS	96 x 96 x 55 mm (HxWxD); Panel cutout : 92 x 92 mm
DISPLAY	7 segment 0.56" LED
DIGITS	1 row 4 Digit
ELECTRICAL CONNECTION	1Ø - 2W
Display Range	0 to 500 VAC
Input Range	25V to 500 VAC
ACCURACY	CLASS 0.5
Mounting Type	Panel Mount
SUPPLY VOLTAGE (AC : 50 / 60 Hz)	80 to 240V AC



# Digital Panel **Meter**

## Single Phase Ampere Meter

### EA 91

#### Features:

- ▶ 4 Digit Ultra bright LED Display
- ▶ True RMS measurement
- ▶ 3 Samples per Second
- ▶ Auto Ranging
- ▶ Universal Auxiliary supply



#### Applications:

- ▶ Control Panel
- ▶ Distribution System
- ▶ Source Desks
- ▶ Power Panels

#### Certifications:

CE RoHS



DIMENSIONS	96 x 96 x 55 mm (HxWxD); Panel cutout : 92 x 92 mm
DISPLAY	7 segment 0.56" LED
DIGITS	1 row 4 Digit
ELECTRICAL CONNECTION	1Ø - 2W
RATED INPUT CURRENT	5A AC (Max - 6A RMS Continuous) / 1A AC (Max - 1.2A RMS Continuous)
CT Primary	1 to 5000A (Programmable)
CT Secondary	1A / 5A (To be specified at the time of ordering)
Burden	<1.0VA
SUPPLY VOLTAGE (AC : 50 / 60 Hz)	80 to 270V AC

# Digital Panel **Meter**

## Three Phase Ampere Meter

### EA 93

#### Features:

- ▶ 4 Digit Ultra bright LED Display
- ▶ True RMS measurement
- ▶ 3 Samples per Second
- ▶ Auto Ranging
- ▶ Universal Auxiliary supply



#### Applications:

- ▶ Control Panel
- ▶ Distribution System
- ▶ Source Desks
- ▶ Power Panels

#### Certifications:

CE RoHS



DIMENSIONS	96 x 96 x 55 mm (HxWxD); Panel cutout : 92 x 92 mm
DISPLAY	7 segment 0.56" LED
DIGITS	1 row 4 Digit
ELECTRICAL CONNECTION	3Ø - 3W, 3Ø - 4W, 1Ø - 2W
RATED INPUT CURRENT	5A AC (Max - 6A RMS Continuous) / 1A AC (Max - 1.2A RMS Continuous)
CT Primary	1 to 5000A (Programmable)
CT Secondary	1A / 5A (To be specified at the time of ordering)
Burden	<1.0VA
SUPPLY VOLTAGE (AC : 50 / 60 Hz)	80 to 270V AC

# Digital Panel **Meter**

## Three Phase Volt Meter

### EV 93

#### Features:

- ▶ 4 Digit Ultra bright LED Display
- ▶ True RMS measurement
- ▶ 3 Samples per Second
- ▶ Auto Ranging
- ▶ Universal Auxiliary supply



#### Applications:

- ▶ Control Panel
- ▶ Distribution System
- ▶ Source Desks
- ▶ Power Panels

#### Certifications:

CE RoHS



DIMENSIONS	96 x 96 x 55 mm (HxWxD); Panel cutout : 92 x 92 mm
DISPLAY	7 segment 0.56" LED
DIGITS	1 row 4 Digit
ELECTRICAL CONNECTION	3Ø - 3W, 3Ø - 4W, 1Ø - 2W
Display Range	0 to 500 VAC
Input Range	25V to 500 VAC
ACCURACY	CLASS 0.5
Mounting Type	Panel Mount
SUPPLY VOLTAGE (AC : 50 / 60 Hz)	80 to 240V AC

# Energy Meter with LCD Display

## EK 75C

### Features:

- ▶ LCD display with backlight
- ▶ Site Programmable CT Primary
- ▶ True RMS measurement
- ▶ 8 Digits KWh Reading
- ▶ RS485 computer interface (optional)
- ▶ Universal Auxiliary supply

### Measuring Parameter

- ▶ Active energy (kWh)



### Applications:

- ▶ Control Panel
- ▶ Distribution System
- ▶ Source Desks
- ▶ Power Panels

### Certifications:

CE RoHS



DIMENSIONS	96 x 96 x 55 mm (HxWxD); Panel cutout : 92 x 92 mm
DISPLAY	16X1 LCD with backlight
DIGITS	8 digits
ELECTRICAL CONNECTION	3Ø - 3W, 3Ø - 4W
RATED INPUT VOLTAGE	Up to 300V AC (L - N) or 500V AC (L - L)
RATED INPUT CURRENT	Nominal 5A AC (Overload (Through CT) - 6A RMS for 1A CT - 1.2A RMS)
Min. Operating Current	0.4% of CT Primary
CT PRIMARY	5000A (Programmable for any value)
CT SECONDARY	5A or 1A (To be specified at the time of Ordering)
COMMUNICATION	RS485 MODBUS RTU protocol (Optional)
Total Active Energy (KWh)	Range of Reading: 0 to 9999999.9 KWh
Accuracy	Class: 0.5
Operating Temperature	0° C to 60° C
SUPPLY VOLTAGE (AC : 50 / 60 Hz)	80 to 480V AC

# Analog Meter

## Ampere AC Meter

### ENA 72, ENA 96

#### Features:

- ▶ True RMS Measurement
- ▶ Scale Interchangeability
- ▶ Non Linear Scale
- ▶ Knife Edge Pointer
- ▶ Glass filled Polycarbonate housing
- ▶ Panel Mounting



#### Specifications

##### Scale and Pointer

Pointer	Knife - edge pointer
Pointer deflection	0 to 90°
Scale characteristics	Near Linear above 10% of nominal full Scale value
Scale division	Coarse - fine
Pointer length	34mm   54mm

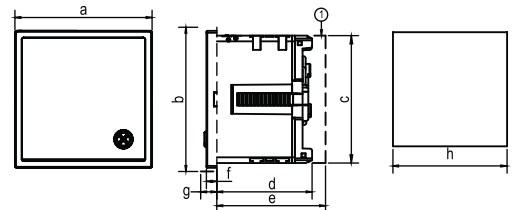
##### Over range:

Ammeters	2 times nominal current
Scale Interchangeability	Interchangeable

#### Electrical Specification

Measured quantity	AC Current
Measuring Current Range	0 to 5A (CT Secondary) Suppress scale : 0 to 5 / 30A (CT Secondary)
Overload Continuously	1.2 times rated Current
Overload Short duration	10 times of rated current upto max 5 sec
Power Consumption	Max 0.8VA
Frequency	50 - 60 Hz
Accuracy	Class 1.5 Max.
IP Class	Rear - IP00 without back cover, IP20 with back cover Front - IP52 case
Ambient Temp.	0 to 50 °C
Position of Use	Vertical ± 5°
Dielectric test	2 kV AC for 1 Minute

#### Dimensions (All are in mm)



Product	72x72	96x96
Dimensions (in mm)		
a	72	96
b	74.50	98.50
c	67	90.50
d	50	50
e	60	60
f	5.50	5.50
g	8	8
h	68	92

#### Certifications:

CE RoHS



# Analog **Meter**

## Volt AC Meter

### ENV 72, ENV 96

#### Features:

- ▶ True RMS Measurement
- ▶ Scale Interchangeability
- ▶ Non Linear Scale
- ▶ Knife Edge Pointer
- ▶ Glass filled Polycarbonate housing
- ▶ Panel Mounting



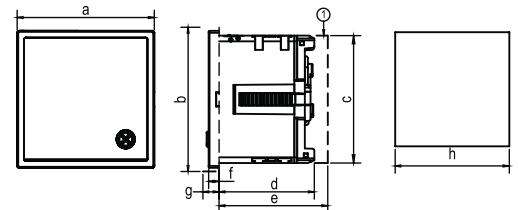
#### Specifications

Scale and Pointer	
Pointer	Knife - edge pointer
Pointer deflection	0 to 90°
Scale characteristics	Near Linear above 10% of nominal full Scale value
Scale division	Coarse - fine
Pointer length	34mm   54mm
Over range:	
Voltmeters	1.2 times nominal voltage
Scale Interchangeability	Interchangeable

#### Electrical Specification

Measured quantity	AC Voltage
Measuring Voltage Range	0 to 300V / 500V / 600V
Overload Continuously	1.2 times rated Voltage
Overload Short duration	2 times of rated Voltage upto max 5 sec
Power Consumption	Max 0.8VA
Frequency	50 - 60 Hz
Accuracy	Class 1.5 Max.
IP Class	Rear - IP00 without back cover, IP20 with back cover Front - IP52 case
Ambient Temp.	0 to 50 °C
Position of Use	Vertical ± 5°
Dielectric test	2 kV AC for 1 Minute

#### Dimensions (All are in mm)



Product	72x72	96x96
Dimensions (in mm)		
a	72	96
b	74.50	98.50
c	67	90.50
d	50	50
e	60	60
f	5.50	5.50
g	8	8
h	68	92

#### Certifications:

CE RoHS



## ENF 72, ENF 96

### Features:

- ▶ Knife Edge Pointer
- ▶ Glass filled Polycarbonate housing
- ▶ Easily replaceable glass and bezel
- ▶ Linear Scale
- ▶ Scale Interchangeability
- ▶ Panel Mounting



### Specifications

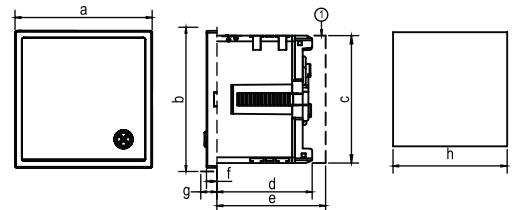
#### Scale and Pointer

Pointer	Knife - edge pointer
Pointer deflection	0 to 90°
Scale characteristics	Linear
Scale division	Coarse - fine
Pointer length	34mm   54mm
Scale Interchangeability	Interchangeable

#### Electrical Specification

Measured quantity	Frequency
Measuring Range	45..55Hz, 55...65Hz, 48...52Hz, 45...65Hz
Voltage	57, 63, 100, 110, 230, 400, 500
Overload Continuously	1.2 times rated Current
Overload Short duration	2 times of rated voltage, 5 sec max. 1 overload
Power Consumption	Max 0.8VA
Frequency	50 - 60 Hz
Accuracy	Class 1.5 Max.
IP Class	Rear - IP00 without back cover, IP20 with back cover Front - IP52 case
Ambient Temp.	0 to 50 °C
Position of Use	Vertical ± 5°
Dielectric test	2 kV AC for 1 Minute

### Dimensions (All are in mm)



Product	72x72	96x96
Dimensions (in mm)		
a	72	96
b	74.50	98.50
c	67	90.50
d	50	50
e	60	60
f	5.50	5.50
g	8	8
h	68	92

### Certifications:

CE RoHS



# Analog **Meter**

## Power Factor Meter

### ENPF 72, ENPF 96

#### Features:

- ▶ Knife Edge Pointer
- ▶ Glass filled Polycarbonate housing
- ▶ Easily replaceable glass and bezel
- ▶ Non-Linear Scale
- ▶ Scale Interchangeability
- ▶ Panel Mounting



#### Specifications

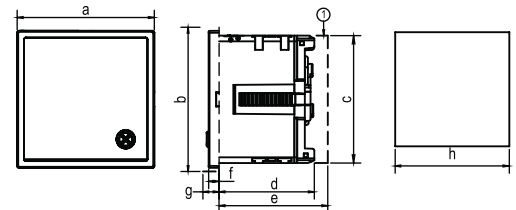
##### Scale and Pointer

Pointer	Knife - edge pointer
Pointer deflection	0 to 90°
Scale characteristics	Non Linear
Scale division	Coarse - fine
Scale length	61mm   97mm
Scale Interchangeability	Interchangeable

##### Electrical Specification

Measured quantity	Power Factor
Overload capacity	(acc. to IS: 1248 / IEC 51 / DIN EN 6001)
Overload Continuously	1.2 times rated Current
Overload Short duration	10 times of rated current upto max 5 sec. 1 overload
Power Consumption	≤1.0 VA
Frequency	50 - 60 Hz
Accuracy	Class 1.5 Max.
IP Class	Rear - IP00 without back cover, IP20 with back cover Front - IP52 case
Ambient Temp.	0 to 50 °C
Position of Use	Vertical ± 5°
Dielectric test	2 kV AC for 1 Minute

#### Dimensions (All are in mm)



Product	72x72	96x96
Dimensions (in mm)		
a	72	96
b	74.50	98.50
c	67	90.50
d	50	50
e	60	60
f	5.50	5.50
g	8	8
h	68	92

#### Certifications:

CE RoHS





## ENA 96-MDI

### Features:

- ▶ User accessible rest Knob
- ▶ Scale Interchangeability
- ▶ Non Linear Scale for MI
- ▶ Knife Edge Pointer
- ▶ Glass filled Polycarbonate housing
- ▶ Panel Mounting



### Specifications

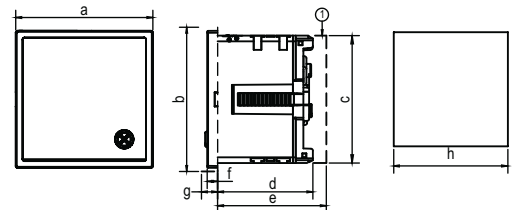
#### Scale and Pointer

Pointer	2 Pointer Knife - edge
Pointer deflection	0 to 90°
Scale characteristics	Near Linear above 10% of nominal full Scale value
Scale division	Coarse - fine
Pointer length	34mm   54mm
Scale Interchangeability	Interchangeable

#### Electrical Specification

Measured quantity	AC Current with Maximum Demand
Thermal time delay	15 Minutes (Bimetalic)
Voltage	57, 63, 100, 110, 230, 400, 500
Scale Overload capacity	1.2 times rated current
Meter Overload Continuously	1.2 times rated Current
Meter Overload Short duration	10 times for 5 Sec. 1 Overloads
Power Consumption	< 2.5VA
Accuracy	Class 1.5
IP Class	Rear - IP00 without back cover, IP20 with back cover Front - IP52 case
Ambient Temp.	0 to 50 °C
Position of Use	Vertical ± 5°
Dielectric test	2 kV AC for 1 Minute

### Dimensions (All are in mm)



Product	96x96
Dimensions (in mm)	
a	96
b	98.50
c	90.50
d	50
e	60
f	5.50
g	8
h	92

### Certifications:

CE RoHS



# Current Transformer

## ENP3 Series - 75A to 500A

Description			Class		
Series	Code	Ratio	Class 0.5	Class 1.0	Class 3.0
			Burden (VA)		
ENP3	ENP3-75/5A	75/5		1	2.5
	ENP3-80/5A	80/5		1	2.5
	ENP3-100/5A	100/5		1	2.5
	ENP3-125/5A	125/5		1	2.5
	ENP3-150/5A	150/5	1	2.5	5
	ENP3-200/5A	200/5	1.5	2.5	7.5
	ENP3-250/5A	250/5	2.5	3.75	7.5
	ENP3-300/5A	300/5	2.5	3.75	10
	ENP3-400/5A	400/5	3.75	5	10
	ENP3-500/5A	500/5	3.75	5	10



Applicable standard	IEC-61869-1&2, BS 3938, IS 2705-1, 2, 3 & 4
Case	20% glass filled polycarbonate, flame retardant grades classified UL 94V-0, 94V 1 & 94 5VA
Insulation	E (Class F upon request)
Highest System Voltage	720V Maximum
Test Voltage	4KV 50Hz; for 1 min
Operation Frequency	50Hz/60Hz
Rated primary rating	75A to 500A
Rated Secondary output	5A standard (1A on request)
Rated burden	1, 1.5, 2.5, 3.75, 5, 10 VA
Class of Accuracy	0.2, 0.25 for laboratory and power measurement 0.5, 0.2 for accurate measuring kWh 1 for general measurement 5 & 3 for indicating instruments

Certifications:

CE RoHS



# Current Transformer ENPH3 Series - 100A to 800A



Description			Class		
Series	Code	Ratio	Class 0.5	Class 1.0	Class 3.0
			Burden (VA)		
ENPH3	ENPH3-100/5A	100/5		1.5	2.5
	ENPH3-125/5A	125/5		1.5	2.5
	ENPH3-150/5A	150/5	1	2.5	3.75
	ENPH3-200/5A	200/5	1.5	2.5	
	ENPH3-250/5A	250/5	2.5	3.75	
	ENPH3-300/5A	300/5	2.5	3.75	
	ENPH3-400/5A	400/5	3.75	5	
	ENPH3-500/5A	500/5	5	7.5	
	ENPH3-600/5A	600/5	5	7.5	
	ENPH3-800/5A	800/5	7.5	7.5	

Applicable standard	IEC-61869-1&2, BS 3938, IS 2705-1, 2, 3 & 4
Case	20% glass filled polycarbonate, flame retardant grades classified UL 94V-0, 94V 1 & 94 5VA
Insulation	E (Class F upon request)
Highest System Voltage	720V Maximum
Test Voltage	4KV 50Hz; for 1 min
Operation Frequency	50Hz/60Hz
Rated primary rating	100A to 800A
Rated Secondary output	5A standard (1A on request)
Rated burden	1, 1.5, 2.5, 3.75, 5, 7.5 VA
Class of Accuracy	0.2, 0.25 for laboratory and power measurement 0.5, 0.2 for accurate measuring kWh 1 for general measurement 5 & 3 for indicating instruments

Certifications:

CE RoHS



# Current Transformer

## ENPJ3 Series - 200A to 1250A

Description			Class	
Series	Code	Ratio	Class 0.5	Class 1.0
			Burden (VA)	
ENPJ3	ENPJ3-200/5A	200/5		3.75
	ENPJ3-250/5A	250/5	2.5	5
	ENPJ3-300/5A	300/5	3.75	5
	ENPJ3-400/5A	400/5	5	7.5
	ENPJ3-500/5A	500/5	7.5	10
	ENPJ3-600/5A	600/5	7.5	10
	ENPJ3-800/5A	800/5	10	12.5
	ENPJ3-1000/5A	1000/5	10	15
	ENPJ3-1200/5A	1200/5	15	20
	ENPJ3-1250/5A	1250/5	12.5	20



Applicable standard	IEC-61869-1&2, BS 3938, IS 2705-1, 2, 3 & 4
Case	20% glass filled polycarbonate, flame retardant grades classified UL 94V-0, 94V 1 & 94 5VA
Insulation	E (Class F upon request)
Highest System Voltage	720V Maximum
Test Voltage	4KV 50Hz; for 1 min
Operation Frequency	50Hz/60Hz
Rated primary rating	200A to 1250A
Rated Secondary output	5A standard (1A on request)
Rated burden	2.5, 3.75, 5, 7.5, 10, 12.5, 15, 20 VA
Class of Accuracy	0.2, 0.25 for laboratory and power measurement 0.5, 0.2 for accurate measuring kWh 1 for general measurement 5 & 3 for indicating instruments

Certifications:

CE RoHS



# Current Transformer ENPL2 Series - 200A to 2000A



Description			Class	
Series	Code	Ratio	Class 0.5	Class 1.0
			Burden (VA)	
ENPL2	ENPL2-200/5A	200/5		3.75
	ENPL2-250/5A	250/5	2.5	5
	ENPL2-300/5A	300/5	3.75	5
	ENPL2-400/5A	400/5	5	7.5
	ENPL2-500/5A	500/5	7.5	10
	ENPL2-600/5A	600/5	7.5	10
	ENPL2-800/5A	800/5	10	12.5
	ENPL2-1000/5A	1000/5	10	15
	ENPL2-1200/5A	1200/5	15	20
	ENPL2-1250/5A	1250/5	12.5	20
	ENPL2-1500/5A	1500/5	15	20
	ENPL2-1600/5A	1600/5	15	20
	ENPL2-1800/5A	1800/5	15	20
	ENPL2-2000/5A	2000/5	15	20

Applicable standard	IEC-61869-1&2, BS 3938, IS 2705-1, 2, 3 & 4
Case	20% glass filled polycarbonate, flame retardant grades classified UL 94V-0, 94V 1 & 94 5VA
Insulation	E (Class F upon request)
Highest System Voltage	720V Maximum
Test Voltage	4KV 50Hz; for 1 min
Operation Frequency	50Hz/60Hz
Rated primary rating	200A to 2000A
Rated Secondary output	5A standard (1A on request)
Rated burden	2.5, 3.75, 5, 7.5, 10, 15, 20 VA
Class of Accuracy	0.2, 0.25 for laboratory and power measurement 0.5, 0.2 for accurate measuring kWh 1 for general measurement 5 & 3 for indicating instruments

Certifications:

CE RoHS



# Current Transformer

## ENPM2 Series - 300A to 3200A

Description			Class	
Series	Code	Ratio	Class 0.5	Class 1.0
			Burden (VA)	
ENPM2	ENPM2-300/5A	300/5	3.75	5
	ENPM2-400/5A	400/5	5	7.5
	ENPM2-500/5A	500/5	7.5	10
	ENPM2-600/5A	600/5	7.5	10
	ENPM2-800/5A	800/5	15	20
	ENPM2-1000/5A	1000/5	15	20
	ENPM2-1200/5A	1200/5	15	20
	ENPM2-1250/5A	1250/5	20	20
	ENPM2-1500/5A	1500/5	20	25
	ENPM2-1600/5A	1600/5	20	25
	ENPM2-1800/5A	1800/5	20	25
	ENPM2-2000/5A	2000/5	30	35
	ENPM2-2500/5A	2500/5	30	35
	ENPM2-3000/5A	3000/5	30	40
	ENPM2-3200/5A	3200/5	30	40



Applicable standard	IEC-61869-1&2, BS 3938, IS 2705-1, 2, 3 & 4
Case	20% glass filled polycarbonate, flame retardant grades classified UL 94V-0, 94V 1 & 94 5VA
Insulation	E (Class F upon request)
Highest System Voltage	720V Maximum
Test Voltage	4KV 50Hz; for 1 min
Operation Frequency	50Hz/60Hz
Rated primary rating	300A to 3200A
Rated Secondary output	5A standard (1A on request)
Rated burden	3.75, 5, 7.5, 10, 15, 20, 30, 40 VA
Class of Accuracy	0.2, 0.25 for laboratory and power measurement 0.5, 0.2 for accurate measuring kWh 1 for general measurement 5 & 3 for indicating instruments

Certifications:

CE RoHS



# Current Transformer ENPO4 Series - 300A to 5000A



Description			Class		
Series	Code	Ratio	Class 0.25	Class 0.5	Class 1.0
			Burden (VA)		
ENPO4	ENPO4-300/5A	300/5		5	7.5
	ENPO4-400/5A	400/5		7.5	10
	ENPO4-500/5A	500/5		10	12.5
	ENPO4-600/5A	600/5		10	15
	ENPO4-800/5A	800/5		15	20
	ENPO4-1000/5A	1000/5	5	15	20
	ENPO4-1200/5A	1200/5	7.5	15	20
	ENPO4-1250/5A	1250/5	7.5	20	20
	ENPO4-1500/5A	1500/5	10	30	40
	ENPO4-1600/5A	1600/5	10	30	40
	ENPO4-1800/5A	1800/5	10	30	40
	ENPO4-2000/5A	2000/5	10	30	50
	ENPO4-2500/5A	2500/5	10	40	50
	ENPO4-3000/5A	3000/5	15	40	50
	ENPO4-3200/5A	3200/5	20	40	60
	ENPO4-3000/5A	4000/5	15	40	60
ENPO4-3200/5A	5000/5	15	40	60	

Applicable standard	IEC-61869-1&2, BS 3938, IS 2705-1, 2, 3 & 4
Case	20% glass filled polycarbonate, flame retardant grades classified UL 94V-0, 94V 1 & 94 5VA
Insulation	E (Class F upon request)
Highest System Voltage	720V Maximum
Test Voltage	4KV 50Hz; for 1 min
Operation Frequency	50Hz/60Hz
Rated primary rating	300A to 5000A
Rated Secondary output	5A standard (1A on request)
Rated burden	1, 1.5, 2.5, 3.75, 5, 7.5 VA
Class of Accuracy	0.2, 0.25 for laboratory and power measurement 0.5, 0.2 for accurate measuring kWh 1 for general measurement 5 & 3 for indicating instruments

Certifications:

CE RoHS



# Current Transformer

## ENPTY1 Series - 600A to 7500A

Description			Class		
Series	Code	Ratio	Class 0.25	Class 0.5	Class 1.0
			Burden (VA)		
ENPTY1	ENPTY1-600/5A	600/5	7.5	12.5	15
	ENPTY1-800/5A	800/5	10	12.5	15
	ENPTY1-1000/5A	1000/5	10	20	25
	ENPTY1-1200/5A	1200/5	10	20	30
	ENPTY1-1250/5A	1250/5	15	20	30
	ENPTY1-1500/5A	1500/5	15	30	40
	ENPTY1-1600/5A	1600/5	20	30	40
	ENPTY1-1800/5A	1800/5	20	30	40
	ENPTY1-2000/5A	2000/5	30	40	45
	ENPTY1-2500/5A	2500/5	30	50	60
	ENPTY1-3000/5A	3000/5	25	50	60
	ENPTY1-3200/5A	3200/5	25	50	60
	ENPTY1-4000/5A	4000/5	30	50	60
	ENPTY1-5000/5A	5000/5	30	50	60
	ENPTY1-6000/5A	6000/5	30	50	60
	ENPTY1-7000/5A	7000/5	30	50	60
	ENPTY1-7500/5A	7500/5	30	50	60



Applicable standard	IEC-61869-1&2, BS 3938, IS 2705-1, 2, 3 & 4
Case	20% glass filled polycarbonate, flame retardant grades classified UL 94V-0, 94V 1 & 94 5VA
Insulation	E (Class F upon request)
Highest System Voltage	720V Maximum
Test Voltage	4KV 50Hz; for 1 min
Operation Frequency	50Hz/60Hz
Rated primary rating	600A to 7500A
Rated Secondary output	5A standard (1A on request)
Rated burden	7.5, 10, 12.5, 15, 20, 30, 40, 45, 50, 60 VA
	0.2, 0.25 for laboratory and power measurement 0.5, 0.2 for accurate measuring kWh 1 for general measurement 5 & 3 for indicating instruments

Certifications:

CE RoHS





## EN DLS10

### Panel Mount Plunger Type



They are widely applied to the travel control, spacing protection and change the use of circuit component of all kinds of machinery equipments, which are machinery, spinning, light industry, electronic instrument and so on.

#### Scope of application:

- Machine tool, mechanical automatic control, constrained motion, transmission mechanism movement or process control

#### TECHNICAL DATA:

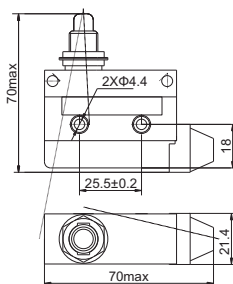
- comply with standards IEC 60947-5-1
- Mechanical life: =600,000 times
- Electrical life: =300,000 times
- Operation frequency: 40t/min
- Operation speed: 0.1mm/s to 0.5mm/s
- Ui 415V Ith 10A
- AC-15 AC380V Ie 0.79A;
- DC-13 DC220V Ie 0.14A

#### MOUNTING:

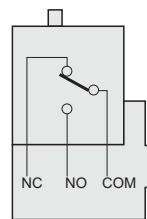
- Ambient temperature: -5°C to + 40°C
- Degree of protection : IP52
- Tropicalization: humidity is 85%(20°C)
- Altitude: less than 2000m

Model	Performance Characteristic	Movement (OF) max	Reset Force (RF) min	Movement Route (PT) max				
EN DLS10		6N	1N	2.5mm	2.5mm	1.2mm	-	21.8±1.2mm

### Overall and Mounting Dimensions



### Contact Type



## EN1UVR

### Single Phase Under Voltage Relay

#### Features:

- ▶ 17.5 mm DIN Rail Mount
- ▶ 1xSPDT Relay Output
- ▶ Green LED for Supply healthy indication
- ▶ Red LED for healthy sensing indication
- ▶ 12 bit sensing



#### Technical Specifications

##### Input Specifications

Supply / Monitoring Voltage (Un) Ph - N	: 220 / 230 / 240V*
Frequency Range	: 48-63 Hz
Power Consumption	: 15 VA Maximum
Monitoring Mode	: Under Voltage
Trip Level (U trip)	: 75% of Un (Factory Set)
Hysteresis	: 2% (Factory Set)
Setting Accuracy	: ± 4%

##### Delays

Power on Delay (t)	: 5 Mins (Min) to 15 Mins (Max)
From Trip to recovery Time Delay (T2) (Settable by linear potentiometer)	: 5 Mins (Min) to 15 Mins (Max)

##### Output

: SPDT Relays  
: AC 15 2A 250V

##### LED Indications

Power On	: 3mm Green LED
Healthy Indication	: 3mm Red LED

##### Housing

Housing Material	: Polyamide 6.6
Colour	: Grey
Dimension	: 90x56.4x17.5 mm
Mounting	: TS 35 DIN Rail

\* Supply / Monitoring Voltage (Un) refers to the phase to neutral nominal voltage for product and its variants.

Product 1  $\Phi$ , 2 wire connection system

Certifications:

CE RoHS



## EN3UVR

### Three Phase Under Voltage Relay

#### Features:

- ▶ 17.5 mm DIN Rail Mount
- ▶ 1xSPDT Relay Output
- ▶ Green LED for Supply healthy indication
- ▶ Red LED for healthy sensing indication
- ▶ 12 bit sensing

#### Technical Specifications

##### Input Specifications

Supply / Monitoring Voltage (Un) Ph - N	: 220 / 230 / 240V*
Frequency Range	: 48-63 Hz
Power Consumption	: 15 VA Maximum
Monitoring Mode	: Under Voltage
Trip Level (U trip)	: 75% of Un (Factory Set)
Hysteresis	: 2% (Factory Set)
Setting Accuracy	: ± 4%

##### Delays

Power on Delay (t)	: 5 Mins (Min) to 15 Mins (Max)
From Trip to recovery Time Delay (T2) (Settable by linear potentiometer)	: 5 Mins (Min) to 15 Mins (Max)

##### Output

: SPDT Relays  
: AC 15 2A 250V

##### LED Indications

Power On	: 3mm Green LED
Healthy Indication	: 3mm Red LED

##### Housing

Housing Material	: Polyamide 6.6
Colour	: Grey
Dimension	: 90x56.4x17.5 mm
Mounting	: TS 35 DIN Rail



#### Certifications:

CE RoHS



# Programmable **Timer**

## **ENMSTMR**

### Five Function Timer

#### Features:

- ▶ 17.5 mm DIN Rail Mount
- ▶ 5 Function
- ▶ 10 Time Ranges
- ▶ Front knobs for Time Range, Time Scale & Mode Setting
- ▶ Slim, Space Saving Design



### Technical Specifications

#### Input Specifications

Supply Voltage	: 230V AC
Frequency Range	: 50 / 60 Hz
Power Consumption	: 15 VA Maximum
Accuracy	: Settings: $\pm 5\%$ of (F.S. = Full Scale) Repeat: $\pm 5\%$ of (F.S. = Full Scale)
Reset	: Reset time < 100 msec

#### Output Specifications

Output Contact	: DPDT (2 C/O)
Contact Rating	: NO / 5A, NC / 3A@250V AC

#### LED Indications

Power On indication	: 3 mm Green LED
Relay On indication	: 3 mm Red LED

#### Function Specifications

Modes	: On Delay (A)   Interval (B) Cyclic equal OFF first (C) Cyclic equal ON first (CI) Pulse Output, 500ms fixed (D)
Time Ranges	: 0.1-1 sec, 0.3-3 sec, 1-10 sec, 3-30 sec, 0.1-1 min, 0.3-3 min, 1-10 min, 3-30 min, 0.1-1 hr, 0.3-3 hr

#### Environmental Specifications

Temperature	: Operating: 0° to 50°C (32° to 122°F) Storage: -20° to 75°C (-4° to 167°F)
Humidity (Non-Condensing)	: 95% RH
Protection Level	: IP40 for Casing, IP20 for Terminals

Certifications:

**CE** RoHS



## ENODTMR3

### On Delay Timer

#### Features:

- ▶ 17.5 mm DIN Rail Mount
- ▶ On Delay
- ▶ 10 Time Ranges
- ▶ Front knobs for Time Range, Time Scale & Mode Setting
- ▶ Slim, Space Saving Design

### Technical Specifications

#### Input Specifications

Supply Voltage	: 230V AC
Frequency Range	: 50 / 60 Hz
Power Consumption	: 15 VA Maximum
Accuracy	: Settings: ±5% of (F.S. = Full Scale)

#### Output Specifications

Output Contact	: SPDT (1 C/O)
Contact Rating	: NO / 5A, NC / 3A@250V AC

#### LED Indications

Power On indication	: 3 mm Green LED
Relay On indication	: 3 mm Red LED

#### Function Specifications

Modes	: On Delay (A)   Interval (B)
Time Ranges	: 0.1-1 sec, 0.3-3 sec, 1-10 sec, 3-30 sec, 0.1-1 min, 0.3-3 min, 1-10 min, 3-30 min, 0.1-1 hr, 0.3-3 hr

#### Environmental Specifications

Temperature	: Operating: 0° to 50°C (32° to 122°F) Storage: -20° to 75°C (-4° to 167°F)
Humidity (Non-Condensing)	: 95% RH
Protection Level	: IP40 for Casing, IP20 for Terminals



#### Certifications:



# Programmable **Timer**

## **ENOFTMR3**

### OFF Delay Timer

#### Features:

- ▶ 17.5 mm DIN Rail Mount
- ▶ Off Delay
- ▶ 10 Time Ranges
- ▶ Front knobs for Time Range, Time Scale & Mode Setting
- ▶ Slim, Space Saving Design



### Technical Specifications

#### Input Specifications

Supply Voltage	: 230V AC
Frequency Range	: 50 / 60 Hz
Power Consumption	: 15 VA Maximum
Accuracy	: Settings: $\pm 5\%$ of (F.S. = Full Scale)

#### Output Specifications

Output Contact	: SPDT (1 C/O)
Contact Rating	: NO / 5A, NC / 3A@250V AC

#### LED Indications

Power On indication	: 3 mm Green LED
Relay On indication	: 3 mm Red LED

#### Function Specifications

Modes	: Off Delay
Time Ranges	: 0.1-1 sec, 0.3-3 sec, 1-10 sec, 3-30 sec, 0.1-1 min, 0.3-3 min, 1-10 min, 3-30 min, 0.1-1 hr, 0.3-3 hr

#### Environmental Specifications

Temperature	: Operating: 0° to 50°C (32° to 122°F) Storage: -20° to 75°C (-4° to 167°F)
Humidity (Non-Condensing)	: 95% RH
Protection Level	: IP40 for Casing, IP20 for Terminals

Certifications:

 RoHS



## ENSDTR3

### Star Delta Timer

#### Features:

- ▶ 17.5 mm DIN Rail Mount
- ▶ SPDT Relay Output
- ▶ Green LED for Star Mode Indication
- ▶ Red LED for Delta Mode Indication
- ▶ Slim, Space Saving Design

### Technical Specifications

#### Input Specifications

Supply Voltage	: 230V AC
Frequency Range	: 50 / 60 Hz
Power Consumption	: 15 VA Maximum
Accuracy	: Settings: ±5% of (F.S. = Full Scale)

#### Output Specifications

Star Mode	
Output Contact	: SPDT (1 C/O)
Contact Rating	: AC 15 2A@250V
Delta Mode	
Output Contact	: SPDT (1 C/O)
Contact Rating	: AC 15 2A@250V

#### LED Indications

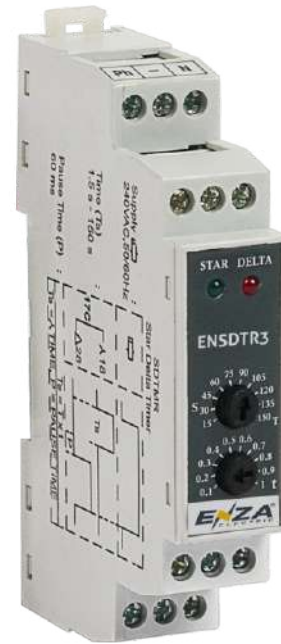
Power On indication	: 3 mm Green LED
Relay On indication	: 3 mm Red LED

#### Function Specifications

Modes	: Star and Delta
Delta mode on time delay (Ts)	: 3-30S, 6-60S
Pause time(P)	: 50 ms - 100 ms

#### Environmental Specifications

Temperature	: Operating: 0° to 50°C (32° to 122°F) Storage: -20° to 75°C (-4° to 167°F)
Humidity (Non-Condensing)	: 95% RH
Protection Level	: IP40 for Casing, IP20 for Terminals



#### Certifications:

CE RoHS



# Earth Leakage Relay

## EN ELR

### Features:

- ▶ 70 mm wide DIN Rail / Panel mount Housing.
- ▶ LED bar-graph provides constant indication of any leakage current
- ▶ Microprocessor controlled with internal monitoring (Self - checking)
- ▶ Adjustable sensitivity ( $I_{\Delta n}$ ) and Time Delay ( $\Delta t$ ) - 0 (Instantaneous) to 10 seconds
- ▶ Separate "Test" & "Reset" push button
- ▶ 2 Relay output - Standard output (S.O) and positive safety output (P.S.O)



## Technical Specifications

### Input Specifications

Supply Voltage - A1 - A2	: 230V AC <b>Tolerance:</b> $\pm 15\%$
Frequency Range	: 50/60 Hz
Power Consumption	: 5 VA Maximum
Monitoring Mode	: Leakage Current
Monitoring leakage current	: Upto 30A
Trip Level Limits	: 80-90 % of $I_{\Delta n}$
Reset Value	: = 85% of tripped level

### Delays

Time delay $\Delta t$	: 0, 60, 150, 250, 500, 800ms, 1, 2.5, 5, 10sec. (user selectable)
Output	: 1xSPNO, 1xSPDT Relay
Output rating	: P.S.O (1A@125V AC / 2A@30V DC.) S.O. (12A@250V AC)

### LED Indications

Power On	: 3 mm Green LED
Bargraph	: 3x3 mm Green LED3 (25, 50 & 75% of actual trip level)
Tripped	: 3 mm Red LED
ENELR Healthy	: 3 mm Red LED (Blinking)

### Housing

Housing Material	: ABS UL - 94 - HB
Colour	: Light Gray
Dimension	: 70x91x58.4 mm
DIN Rail enclosure component	: Poly Carbonate
Mounting	: TS 35 DIN Rail

Certifications:

CE RoHS





# Toroid Circular Core Balanced Current Transformer

## ENCBP Series

### Features:

- ▶ Compact design (shallow depth).
- ▶ Available in many common aperture sizes (35...310mm).
- ▶ Single and Three Phase system compatible.
- ▶ Surface mounted using integral moulded fixing feet.
- ▶ Designed to detect residual leakage current in earth leakage applications.
- ▶ High sensitivity and accurate.



### Technical Specifications

#### Input

Connection type	Single or 3 phase (3 wire and 4 wire)
Rated system voltage	720Vac
Rated insulation level	3kV 50Hz for 1 minute
Rated impulse voltage	8kV 1,2/50 $\mu$ S
Transformation ratio	1000:1
Rated frequency	47...63Hz

#### Environment

Reference temperature	23°C $\pm$ 2°C
Max distance between toroid and relay	50 metres (Max.)
Ambient temperature	-10°C...+55°C
Storage temperature	-20°C...+75°C
Relative humidity	0...95%, non condensing

#### Housing

Housing material	Self-extinguishing polycarbonate (UL94-0)
Mounting	4 x Integral mounting feet

#### Termination

Secondary current connection	Screw type - rising clamp
Max wire size	0.2...3.0mm

### Certifications:



Product Code	Inner Diameter	Turns Ratio
ENCBP35	35mm Inner Diameter	1000:1
ENCBP70	70mm Inner Diameter	1000:1
ENCBP120	120mm Inner Diameter	1000:1
ENCBP210	210mm Inner Diameter	1000:1
ENCBP310	310mm Inner Diameter	1000:1
ENLBT600X500-Y	Rectangular: 600x500	1000:1



## Enza Electric Pvt Ltd



MEPZ - Special Economic Zone, Chennai,  
Tamil Nadu 600045, India



+91 - 86060 75125, support@enzaelectric.com

[www.enzaelectric.com](http://www.enzaelectric.com)

